

# Broome Civic Centre

---

## AV Equipment & technical specifications

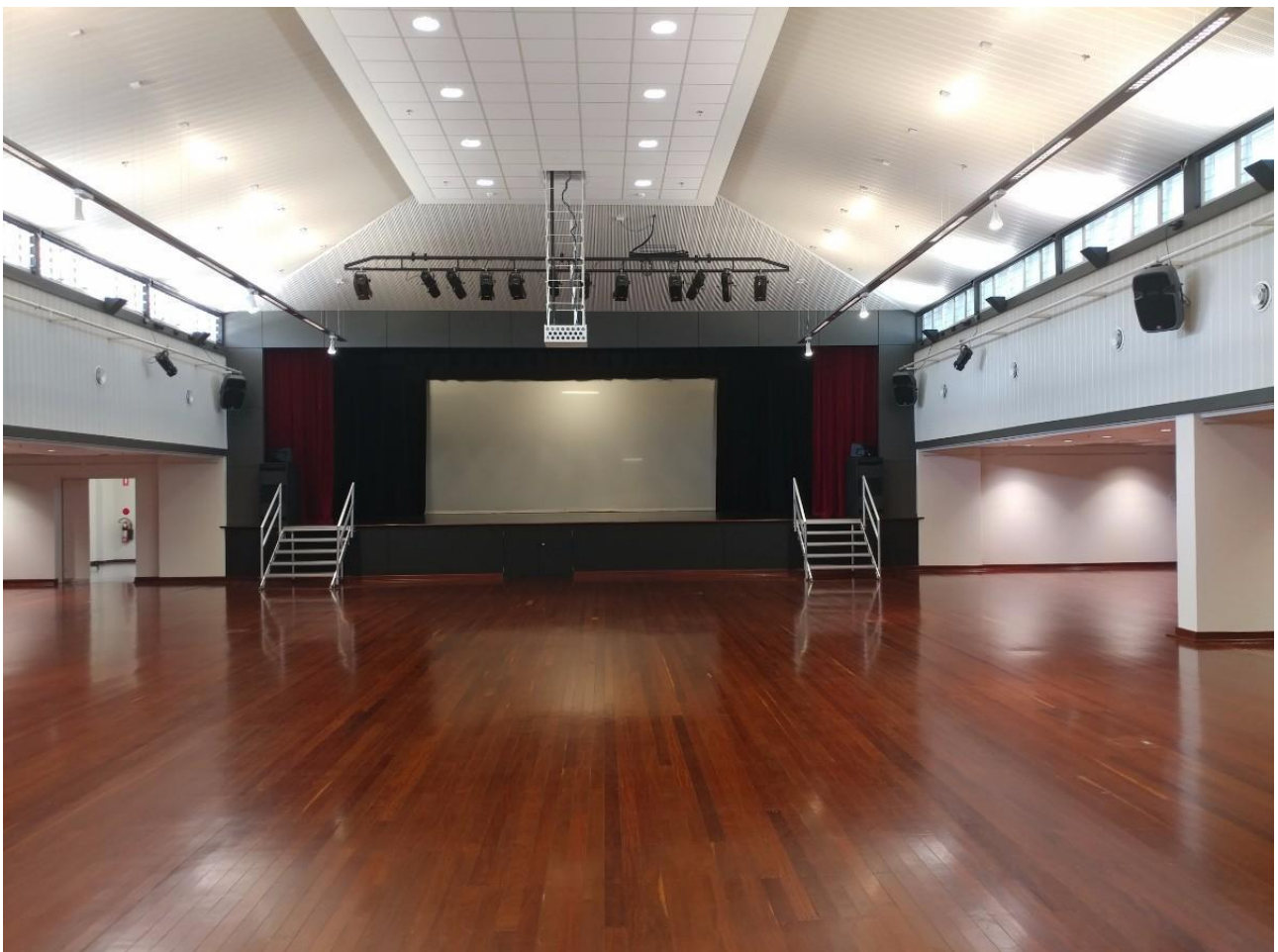
**Updated: 15, March, 2019**

**Author: Jaye Alexie Smoker**

**Contact: 0437 130 207**

**Email: [Jaye@unboundsound.com.au](mailto:Jaye@unboundsound.com.au)**

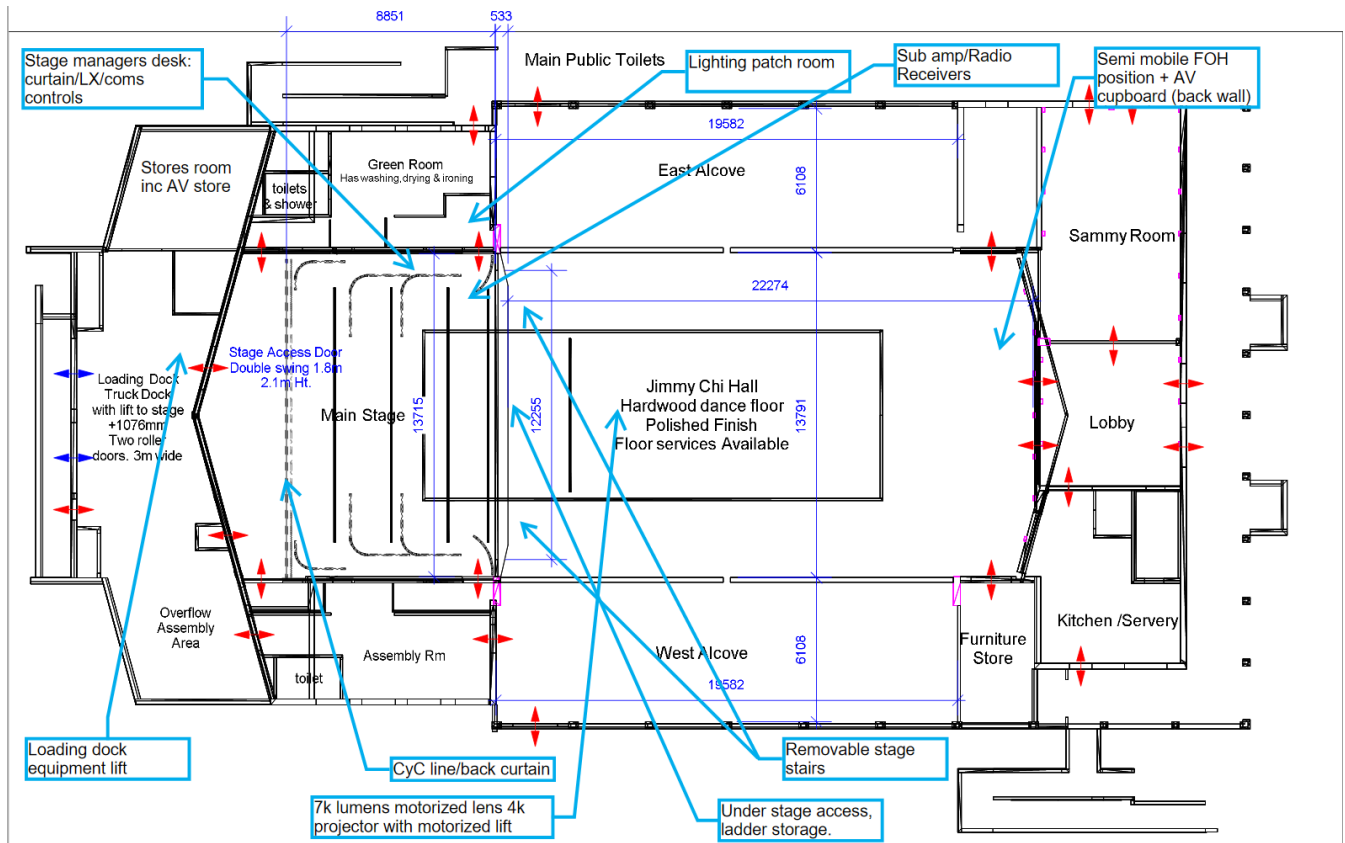
**All Technical matters should be addressed to Jaye through details given above.  
Additional documents, photos and drawings can be found [HERE](#).**



## Contents

Main Hall–The Jimmy Chi Hall.....	3
Audio System.....	3
Overview:.....	3
System Specifications:.....	3
Lighting System.....	5
Overview:.....	5
Audio Visual.....	5
Overview:.....	5
Specifications:.....	6
Stage & Masking:.....	6
Masking:.....	7
Ancillary Equipment:.....	7
Dressing Rooms & Facilities.....	7
Green Room, Stage Left:.....	7
Holding Area, Stage Right:.....	7
The Pigram Garden Stage:.....	9
Overview:.....	9
Stage & Venue Plan:.....	9

## Main Hall – The Jimmy Chi Hall



### Audio System

**Overview:** The main hall sound system consists of 2X yamaha DS12 FOH speakers with an additional 6X JBL EON 305 passive roof side mounted speakers (for added announce coverage if needed) above the main hall and two large install double 18" band pass subwoofers at each front side of stage. FOH position is at the back right side of the hall consisting of an AV cupboard with extra coverage amps, processor and an automated Aux/ipod jack mixer. Also at FOH is the large semi portable mixing desk housing a behringer X32 32ch +16 return digital mixer. Next to FOH is the laptop presenter portable desk housing a laptop with USB audio connection. Stage monitors consists of inbuilt & roll out analog multi cores with 3X Yamaha dbr10 and 1x JBL EON315 active speakers available (flying option available).

The main hall has a hearing loop for sound augmentation for the hard of hearing. The system is supplied by Ampetronic & Sennheisser and runs from the sum mono output the same as the speakers.

### System Specifications:

**FOH Speakers:** 2X Yamaha DSR12 main + extra 6x JBLEON305 powered by 3x Crown XL1000amplifiers, East and West wings have ceiling mounted JBL Control Contractor speakers powered by one Crown XL1000amplifier. The dual 18" subwoofers each side of stage is powered by an Inuke6000dsp amplifier located next to the right subwoofer. The main FOH audio system is turned on/off via a wireless switch located in the presenter cabinet at FOH (green 1 on/red 1 off).

**Hearing Loop:** The system consists of 3 loops being Main Hall powered by 2x ILD1000G loop drivers with an SP5 Signal Processor. East & West wings each have a loop powered by 2x ILD500 Loop drivers with SP5 Signal Processors.

**Onstage Monitors:** 3x powered Yamaha DBR10 speakers as well as 1X powered JBL EON 315 speakers are available. The default configuration is 2X dbr10 as side-fill on top of the subs with a copy of main FOH audio feed.

**Automated two tier audio mixing:** The Main audio system has two layers of mixing. The advanced X32 32 channel digital console and sitting above that is the automated XR18 hands off digital mixer. All advanced shows are to use the large X32 with a skilled technician where as simple shows can be run with minimal setup via the automated XR18 mixer. The XR18 automates and protects the system and is setup for easy use of the house laptop audio, Ipod/aux jack and two wireless microphones with compression and side chain compression of separate music & mic busses. This system is adequate for less demanding events and can be used without any technicians running it. The main X32 mixer does run through the XR18 but it is simply pass through without changing the signal except for overall limiting. Buss 3 on the XR18 is for the aux fed subwoofer send and EQ/crossover can be adjusted here. The X18 mixer has no physical controls and is designed to be hands off, set and forget. Speak to the senior civic center tech before attempting any changes to this system.

**FOH Desk & Drive:** The FOH desk is an X32 digital 32ch mixing console that can be remotely controlled via wifi. The X18 air mixer integrates different rooms, automated wireless microphones, subwoofer system & automated aux/ipod jacks. This XR18 mixer does not change the X32 input signal and is only used to mix the other automated systems in. The stage is connected to FOH via a 24+4ch and a 12 + 4 extendable multi core. On stage patching has audio tie lines to three points on stage.

**Playback/Record:** The desk has an ipod/aux cable and can be connected directly to the laptop via USB. Additionally, after the main desk there is the automated ipod/aux cable connected to the main AV rack and the laptop playback output (can be re-routed) is connected after the main desk too. Recording is available via a USB socket on the X32 mixer, recording the stereo main output of the desk. Multichannel recording is possible with a direct laptop connection via USB and having a DAW and driver software installed and configured.

**Microphones & Input Devices:** (Wired mics located in the lockable audio road case)

- 2x Shure SM57inst/voc mics
- 2x SM58 Shure voc mics
- 2 x Sennhieser e835 vocal mics
- 1 x Audix drum microphone pack, 1x D6(Kick) 2X adx51(OH) 3X i5(inst/sn/tom)
- 4x DI, BSSAR133 direct boxes
- 1x Stereo ARX USB DI Audiobox (for computer presentations)
- 2 x Shure PGX Radio Microphone systems with lavalier and high end headset microphones
- 2x Shure SLX Handheld Radio Microphone, SM58 Capsules
- 2X automated AKG wireless microphones (through automated mixer only, not X32)

There are 8x tall boom microphone stands and 6 small mic stands as well as 20X cable trays located in the stands/trays lockable road case.

The center has two Lecterns that one of which has a stand for a wireless mic but no integrated power, light or other attachments

**Talkback system & Audio loop patch:** The venue has a Jands Ezicom 4 line talkback master with four headsets and belt packs. The master is located at the stage managers desk. One dedicated callbox lives in the right main dressing room driven from the Talkback master station.

## Lighting System.

### Overview:

The system is hung from 5 motorized bars, 1 FOH and the remaining 4 over stage. Each bar has 12 circuits with the LX5 (rear) having only 8. The hall has lighting bars running full length and either side at a height of 4 meters. There are six circuits located at the stage end of these two bars. An additional 12 circuits are located at stage level, up stage left. All circuits are terminated at the dimmer patch room located in the Green Room on Stage left. This is also the location of the DMX patch with patch points for the reticulated DMX, Up stage left, FOH and at the Stage Managers position. Each motorised lighting bar has a POE artnet e that output 2 universes of DMX data. port/universe 1 is for static fixtures and port/universe 2 is for moving head fixtures.

Full delegation and location for lighting bars can be found on the hanging plot as well as the standard rig.

### Lighting Control:

1. 1x Martin MPC system running on a wireless tablet at FOH with an M-Play wing attached.
2. 1x Jands DDX8– DMX splitter (located in Dimmer patch room stage left Greenroom.)
3. 4x Jands WMX 12ch one bank @ 2.4kW/channel dimmer racks. (located in Dimmer patch room stage left Greenroom.)
4. AV only wifi at FOH position
5. Lighting Artnet Ethernet POE injector switch located on stage left next to the subwoofer
6. 5X artnet nodes one for each lighting bar above stage, FOH/main hall does not have any and is patched through instead. One node is located with the ethernet POE switch stage left that feeds the side bars out at FOH

### Luminaires

1. 8x 0.5kW Prolite Fresnel, C/W Barn doors
2. 8x 650W Prolite Zoom profile
3. 11x 1kW Prolite Fresnel, C/W Barn doors
4. 22X bee eye 6X40w RGBW moving head lights with zoom (6-50deg) and beam rotate
5. 14X LED blinder bar, 8X30w RGB 60deg
6. 4 x RGB quad head LED lighting bars
7. 6 x RGB led bar cyc bars with diffusers applied 15deg or 180deg with diffuser (not in use)

## Audio Visual/Projections

### Overview:

The main hall has front ceiling mounted projector mounted on a retractable base. The projector can be focused on two projection surfaces. A drop down screen sits just DS of the FOH Tab/Curtains, the second surface is the white cyclorama up stage, this is full stage depth and width image.

The projector input is normally a HDMI via aCAT6 link set up from FOH but also available for setup from stage left as HDMI. Full size HDMI cable input only, bring your own adapters if you need them.

Audio output from computer to system is via an ARX Audiobox VC which runs via a USB2 port OR 10m jack input cable. The USB device will usually install as default driver for your audio output and normally set up from FOH and running through the automated audio mixer.

The center has one lectern on castors. It has no microphone, light or powers lots.

## **Specifications:**

### **Projector: Epson EB-G7500UNL**

- 6500 ANSI lumens
- Resolution WUXGA Native (1920x1200) + 4k enhancement
- Projection screen size 60 to 320inches
- Projection lens (ELPLM08) Motorized Focus/Zoom using remote with memorized positions (1 curtain, 3 cyc)
- Zoom ratio 1.0 - 1.6x

**Screen:** Screentechnics Cinematech 150 Motorized"

**Screen lifter:** Screentechnics Inter lift projector Motorized lifter

**Audio Adaptor:** ARX AudioboxUSB2 DI-VC (2X XLR output) driverless win or mac OR aux

## **Stage & Masking:**

The stage measurements:

Proscenium Width:	12255mm
Stage width:	13715mm
Stage depth from Proscenium to Cyclorama:	8851mm
Thrust depth from Proscenium:	533mm Stage
Height from floor:	1067mm
Proscenium Height:	3524mm
Stage height to ceiling:	4910mm
Stage height to lowest obstruction:	4000m

Two removable sets of stairs with railings each side of the front stage for audience entry

### **Masking:**

The stage has a red velvet FOH curtain. This opens from centre and is motorized, operating position beside SM position SL. Masking to side entries DS is via a red velvet tormentor on either side.

The stage has three sets of black woolen legs that can be tracked on and offstage.

The stage has three sets of fixed height and depth black woolen borders set DS of each of the onstage lighting bars.

There is one sharks tooth white cyclorama located upstage. This is on tracks so can be relatively easily struck and stowed.

There is one full width split black woolen tab with centre opening, manually operated from USSL. This tab line is immediately DS of the cyclorama.

### **Ancillary Equipment:**

*Hazer* – Martin Magnum 2500 Hazer with 8m wired controller

### **Dressing Rooms & Facilities**

#### **Green Room, Stage Left:**

The green room has basic furniture, chairs & trestles as needed. Shower and toilets x2. Access to stage is via US or DS entry with stairs leading up to stage. Wheel chair access from US entry.

#### **Facilities:**

- Washing Machine
- Washing Sink
- Clothes Dryer
- Dressing Mirror, large
- Dress hanging Rack

#### **Holding Area, Stage Right:**

The green room has basic furniture, chairs & trestles as needed. Shower and toilet. Access to stage is via US or DS entry with stairs leading up to stage. Wheel chair access from US entry.

#### **Facilities:**

- Dressing Mirror, large
- Dress hanging Rack
- Sink with Tea and Coffee in overflow area
- Fridge



## The Pigram Garden Stage:

### Overview:

This is a covered outdoor space with a stage set at the end of a terraced public viewing area. The area is serviced from an AV room. There is one automated XR12 audio mixer connected to one Crown XL1000 amplifier to drive 2xJBL Control 30 all weather speakers mounted either side of stage. Two automated microphones one ipod/aux jack as well as a set of stereo XLR inputs are available. The stage has a 20+4 stage box with tails in the AV room. A port to the outside allows for extension of the stage core out into the audience area.

There is no fixed lighting rig other than 4x motorized trusses with circuits terminating in the dimmer control & patch side of stage right, located in a lockable cupboard/shed. There is a DMX patch between the 24ch of installed DMX Dimmer, no control.

Additional audio/lighting equipment can be moved in from the main hall depending on the event with extra labour costs.

The venue has a passive infra red radiator for hearing loop.

### Stage & Venue Plan:

Please refer to drawings

Stage width: 10650mm

Stage Depth: 6050mm

Stage height from floor: 1108mm

Stage height to roof: 5813mm

### Photos:

**More:** [Cloud Link](#)

Pigram garden

|  
Main Hall (jimmy Chi hall)



FOH

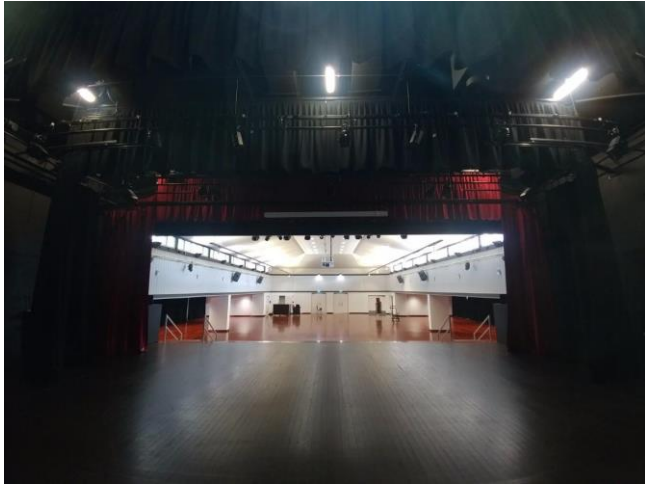


Stage from left

Loading Dock



Stage from right



From Stage



Green Room